

JUST IN TYPE

# SUIT SANS PRO

Aa Aa Aa Aa Aa Aa Aa Aa Aa Aa Aa  
Aa Aa Aa Aa Aa Aa Aa Aa Aa Aa Aa

BY DIEGO MALDONADO

**Suit Sans Pro** is an extended family project with **1377 glyphs** in **24 styles** between roman and italics. The typeface supports several latin languages, and was made for display and text.

**RECOMMENDED SIZE USAGE**

48pt +	Aa ULTRA THIN	Aa
	Aa THIN	Aa
12pt +	Aa ULTRA LIGHT	Aa
	Aa EXTRA LIGHT	Aa
10pt +	Aa LIGHT	Aa
	Aa REGULAR	Aa
8pt +	Aa MEDIUM	Aa
	Aa SEMI BOLD	Aa
	Aa BOLD	Aa
12pt +	<b>Aa EXTRA BOLD</b>	<b>Aa</b>
	<b>Aa BLACK</b>	<b>Aa</b>
	<b>Aa HEAVY</b>	<b>Aa</b>

**ITALICS**

**CHOOSE LIFE. CHOOSE A JOB.  
CHOOSE A CAREER. CHOOSE A FAMILY.**

*Choose a fucking big television, Choose washing machines, cars, compact disc players, and electrical tin openers.*

CHOOSE GOOD HEALTH,  
**LOW CHOLESTEROL AND DENTAL INSURANCE.**

*Choose fixed- interest mortgage repayments. Choose a starter home. Choose your friends. Choose leisure wear and matching luggage. Choose a three piece suite on hire purchase in a range of fucking fabrics.*

**Choose DIY and wondering who you are on a Sunday morning.**

*Choose sitting on that couch watching mind-numbing sprit-crushing game shows,*  
**STUFFING FUCKING JUNK FOOD INTO YOUR MOUTH.**

CHOOSE ROTTING AWAY  
AT THE END OF IT ALL,

**pishing you last in a miserable home,**  
*nothing more than an embarrassment*

*to the selfish, fucked-up brats you have spawned to replace yourself.*

**CHOOSE YOUR FUTURE. CHOOSE LIFE...**

*But why would I want to do a thing like that?*

**TRAINSPOTTING**

18PT **Suit (clothing)**

10PT In clothing, a **suit** is a set of garments made from the same cloth, usually consisting of at least a jacket and trousers. **Lounge suits** (also known as **business suits** when sober in colour and style), which originated in Britain as country wear, are the most common style of Western suit. Other types of suit still worn today are the *dinner suit*, part of black tie, which arose as a lounging alternative to dress coats in much the same way as the day lounge suit came to replace frock coats and morning coats; and, rarely worn today, the morning suit. This article discusses the lounge suit (including business suits), elements of informal dress code.

The variations in design, cut, and cloth, such as two- and three- piece, or single- and double- breasted, determine the social and work suitability of the garment. Often, suits are worn, as is traditional, with a collared shirt and necktie. Until around the 1960s, as with all men's clothes, a hat would have been also worn when the wearer was outdoors. Suits also come with different numbers of pieces: a two-piece suit has a jacket and the trousers; a three piece adds a waistcoat (known as a vest in North America); further pieces might include a flat cap made from the same cloth.

Originally, as with most clothes, a tailor made the suit from his client's selected cloth; these are now often known as bespoke suits. The suit was custom made to the measurements, taste, and style of the man. Since the Industrial Revolution, most suits are mass-produced, and, as such, are sold as ready-to-wear garments (though alteration by a tailor prior to wearing is common). Currently, suits are sold in roughly four ways:

- **BESPOKE**, in which the garment is custom-made by a tailor from a pattern created entirely from the customer's measurements, giving the best fit and free choice of fabric;
- **MADE TO MEASURE**, in which a pre-made pattern is modified to fit the customer, and a limited selection of options and fabrics is available;
- **READY-TO-WEAR OR OFF-THE-PEG**, which is sold ready to be tailored or finally as is;
- **SUIT SEPARATES** where jacket and trousers are sold separately, allowing a customer to choose the size that is best for them and limit the amount of alterations needed.

**Language Support:**

**Western, South Eastern and Central European, Vietnamese, Pinyin, IPA, Pan African Latin**

Afrikaans, Aghem, Akan, Albanian, Asu, Azerbaijani, Bafia, Bambara, Basque, Bemba, Bena, Bosnian, Breton, Catalan, Chiga, Congo Swahili, Cornish, Croatian, Czech, Danish, Duala, Dutch, Embu, English, Esperanto, Estonian, Ewe, Faroese, Filipino, Finnish, French, Fulah, Galician, Ganda, German, Gusii, Hausa, Hungarian, Icelandic, Igbo, Indonesian, Irish, Italian, Jola-Fonyi, Kabuverdianu, Kalaallisut, Kalenjin, Kamba, Kikuyu, Kinyarwanda, Koyra Chiini, Koyraboro Senni, Kwasio, Langi, Latvian, Lingala, Lithuanian, Luba-Katanga, Luo, Luyia, Machame, Makhuwa-Meetto, Makonde, Malagasy, Malay, Maltese, Manx, Maori, Masai, Meru, Meta', Morisyen, Nama, North Ndebele, Norwegian Bokmål, Norwegian Nynorsk, Nuer, Nyankole, Oromo, Polish, Portuguese, Romanian, Romansh, Rombo, Rundi, Rwa, Samburu, Sango, Sangu, Sena, Serbian (Latin), Shambala, Shona, Slovak, Slovenian, Soga, Somali, Spanish, Swahili, Swedish, Swiss German, Taita, Tasawaq, Teso, Turkish, Vai (Latin), Vietnamese, Vunjo, Welsh, Yangben, Yoruba, Zarma, Zulu

**"The first rule of Fight Club is: You do not talk about Fight Club."**

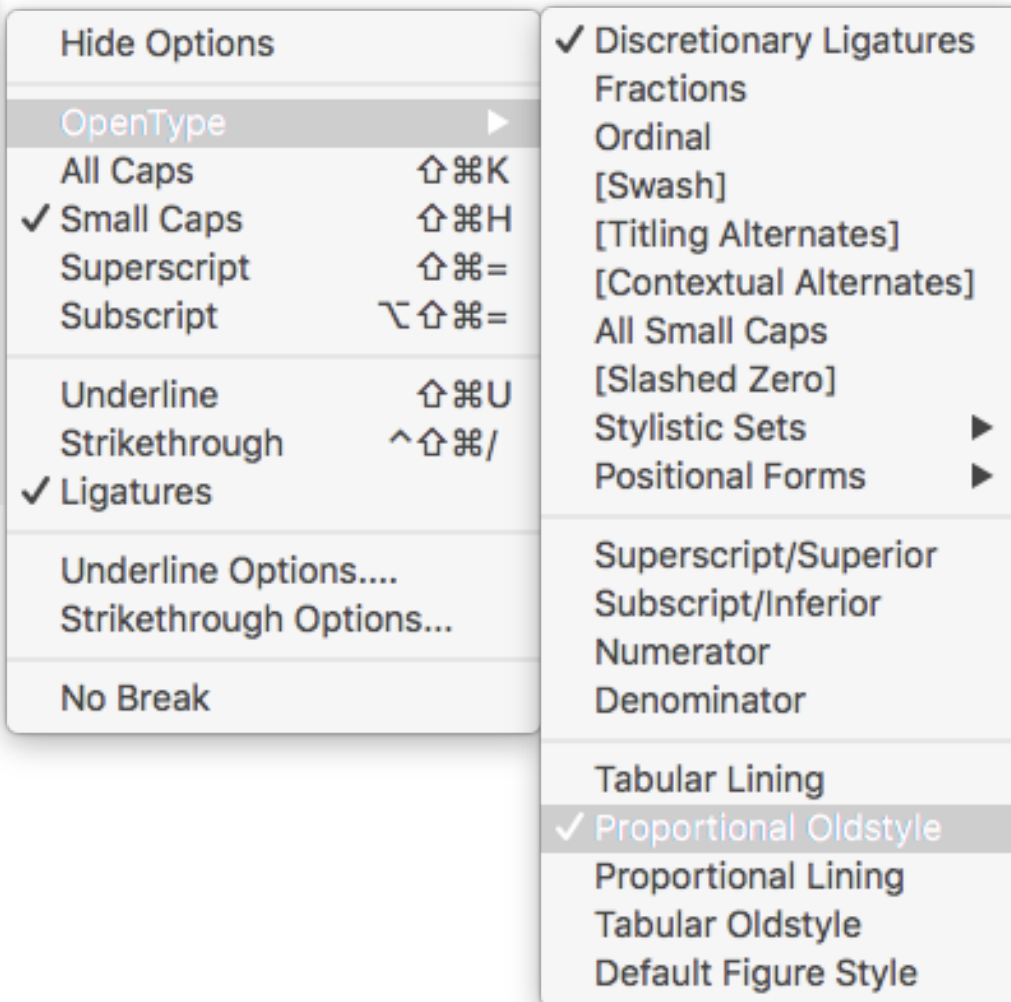




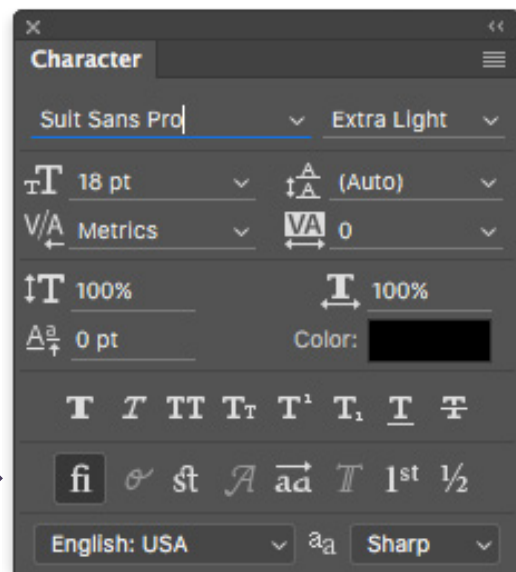


## ACCESS OPENTYPE FEATURES

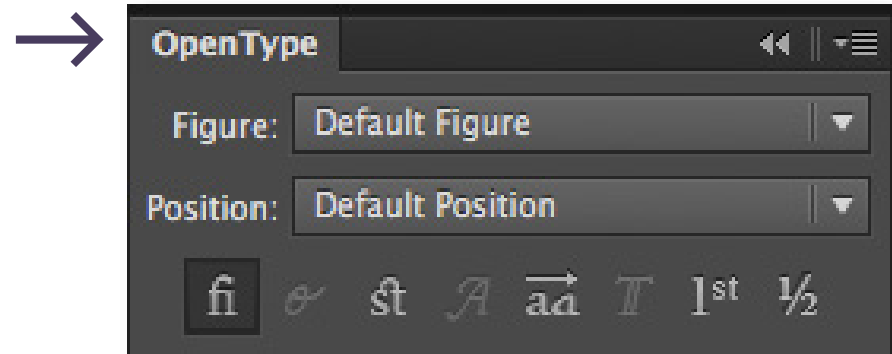
### InDesign



### Photoshop



### Illustrator





OTHER FONTS FROM JUST IN TYPE

Sapeca

**Befter Sans**

**SORVETTERO**

Pasta Script

BY DIEGO MALDONADO

**Garoa**

BY TONY DE MARCO & DIEGO MALDONADO

**Terrorista**

BY TONY DE MARCO & BERNARDO FARIA

SEE MORE AT [JUSTINTYPE.COM](https://justintype.com) | [MYFONTS.COM/FOUNDRY/JUSTINTYPE](https://myfonts.com/Foundry/Justintype)

